

## **Engraved Granite Edging Stones**

**6" x 6" - \$600**

**6" x 12" - \$1,000**

Two sizes of granite stones are available for engraving with the name of someone you love. All granite edging stones are the same charcoal colour and the number of letters to be engraved is limited by the space of the desired stone. After your order is received, the Foundation will send you a proof of the engraving. The current plan is to place edging stones early in the spring and again in the late summer.

## **Garden Bench or Newly Planted White Pine or Maple Tree \$3,000**

Wooden benches are placed around the garden; there are currently six available. An engraved plaque is applied to the bench with the name of your loved one. If you prefer, the Foundation will plant a White Pine or Maple Tree and place a plaque nearby to honour your love one.

## **A Dedicated Garden \$10,000**

The Huntsville Hospital Honour Garden offers special areas for dedication. You and your family are invited to visit the garden with a representative from the Foundation to help you choose an area. A plaque is placed in your garden space with the name of the person you wish to honour. The first dedicated garden is now in place. That Donor has been extremely generous by providing a Brenda Wainman Goulet sculpture and a stone bench for their special space. All dedicated gardens are designed and planted with input from the Donor and the Foundation.

## **I/We want to give to our Hospital**

I/We Wish to Honour \_\_\_\_\_  
with a:

- 6"X6" engraved stone - \$600
- 6"X12" engraved stone - \$1,000
- Garden Bench - \$3,000
- White Pine or Maple Tree - \$3,000
- Dedicated Garden Area - \$10,000

Name to appear as \_\_\_\_\_

I/We understand that nothing will be engraved until a proof has been reviewed.

Name: \_\_\_\_\_

Address: \_\_\_\_\_  
\_\_\_\_\_

Telephone: \_\_\_\_\_

Email: \_\_\_\_\_

Cheque     VISA     MasterCard

Card Holder Name: \_\_\_\_\_

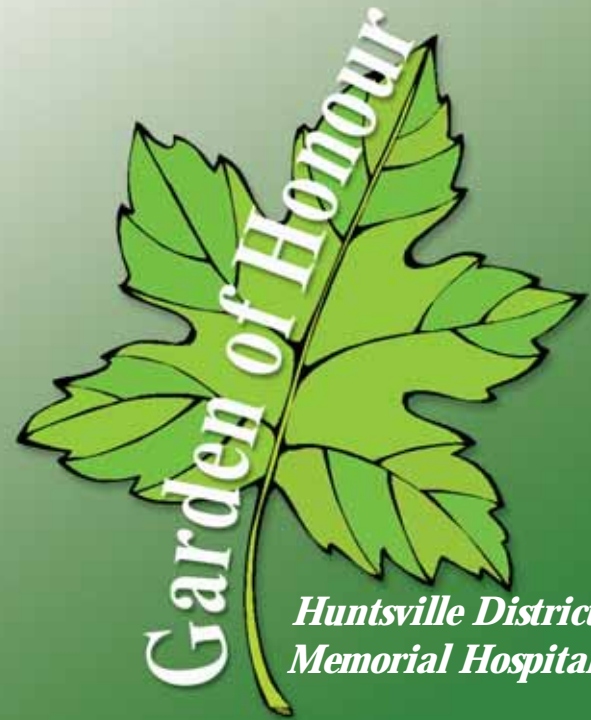
Card Number: \_\_\_\_\_

Exp Date: \_\_\_\_\_

Signature: \_\_\_\_\_



*Please notify us if as a Donor, you wish to remain Anonymous.*



***Surrounded by nature,  
love, and friendship,  
we refresh our souls.***

Mary Sinclair

A fundraising project of  
Huntsville District Memorial  
Hospital Foundation  
4-100 Frank Miller Drive  
Huntsville ON, P1H 1H7  
705.789.4756

## **Your Garden is Ready to Enjoy**

The Huntsville Hospital Honour Garden is a peaceful respite created in the wooded copse directly in front of the Hospital. Thanks to a generous Anonymous Donation; the garden is dedicated to the former Patrons and Staff of Huntsville Planing Mills.

When you visit, you will see small gardens, native trees, fauna, quiet benches and a gentle stream; all of which provide a serene experience. A special feature is the interlocking brick walk that begins under a trellis and travels around the Hospital to a patio and gazebo, with gardens and benches along the way. You can meander the lower walkways of crushed granite, through the shade of tall trees, view dedicated garden areas and a bronze sculpture called 'Raven' by Brenda Wainman Goulet, then pass over the intermittent stream by way of a replica of Huntsville's Swing Bridge. The garden has five wheelchair accessible entrances including one from the door outside the Hospital Cafeteria.

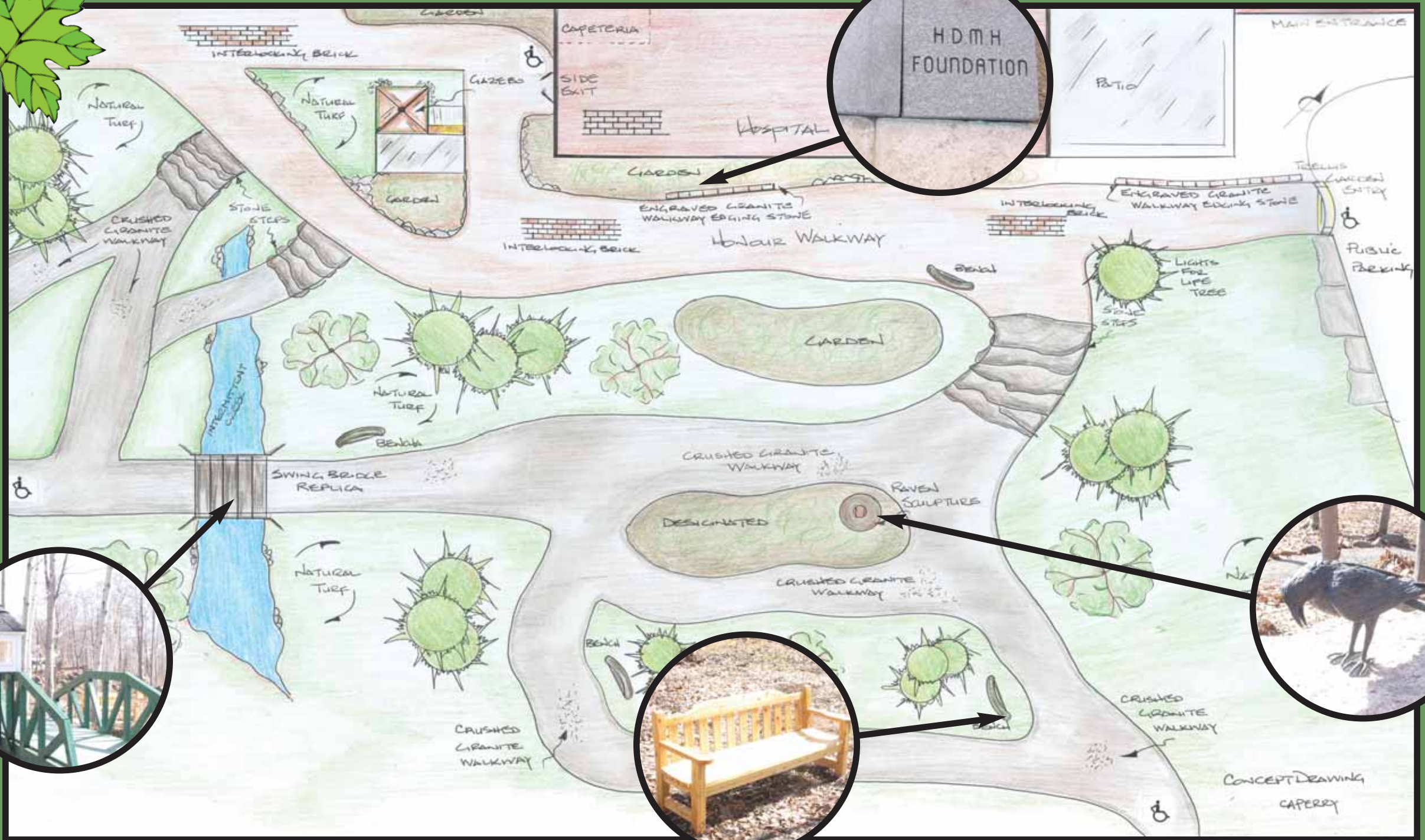
### ***Honour Someone You Love***

The Huntsville District Memorial Hospital Foundation is proud to introduce a special new way to honour a loved one and to ensure the health of our community. All funds raised through the Honour Garden program will be used for Huntsville Hospital's priority equipment needs.





# Garden of Honour



*Surrounded by nature, love, and friendship, we refresh our souls. - Mary Sinclair*